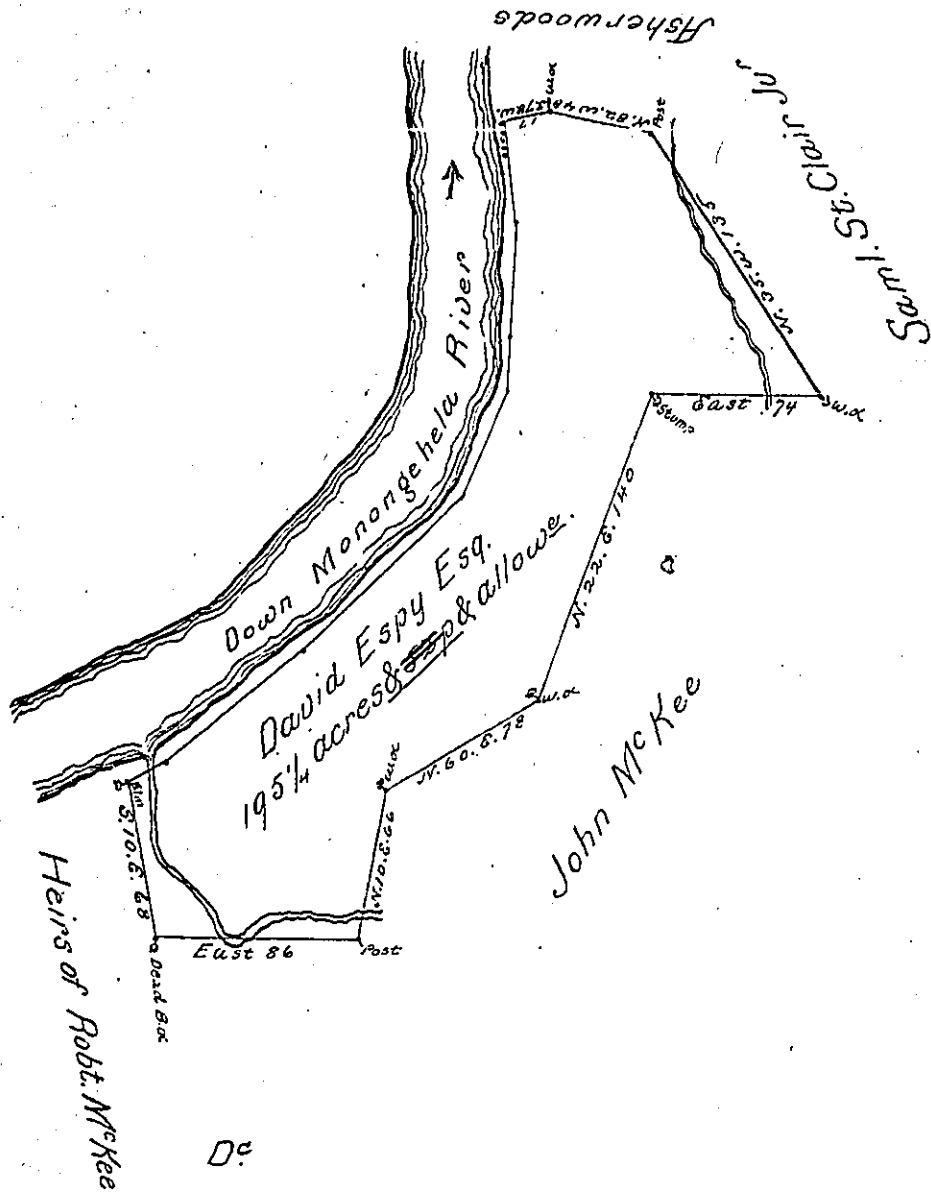


A74-122



Courses up the River

- S. 9. E. 44 perches
- S. 1. E. 52
- S. 5. W. 18
- S. 25. W. 47
- S. 45. W. 98
- S. 50. W. 78
- S. 64. W. 16 to an Elm

353

& place of Begin g.

In Pursuance of a warrant bearing date 16th  
 Novemb. 1787 Surveyed on the 27th day of ~~August~~ <sup>November</sup> 1787 unto David  
 Espy Esq. The above Described Tract of Land Situate on the  
 Monongehela River in Huntington Township in the County  
 of Westmoreland Containing One Hundred & Ninety five  
 acres & 52 perches & allowance of Six pr. Cent for roads &c.

To John Lukens Esq. }  
 Surveyor General }

Benj. Lodge L.S.

IN TESTIMONY that the above is a copy of the original remaining on file in  
 the Department of Internal Affairs of Pennsylvania, made  
 conformably to an Act of Assembly approved the 16th day of  
 February, 1833, I have hereunto set my Hand and caused  
 the Seal of said Department to be affixed at Harrisburg,  
 this second day of January 1900

*James W. Fatta*  
 Secretary of Internal Affairs.